

1 GROUND LEVEL PLAN

STAGE 1 OFFICE PLAN

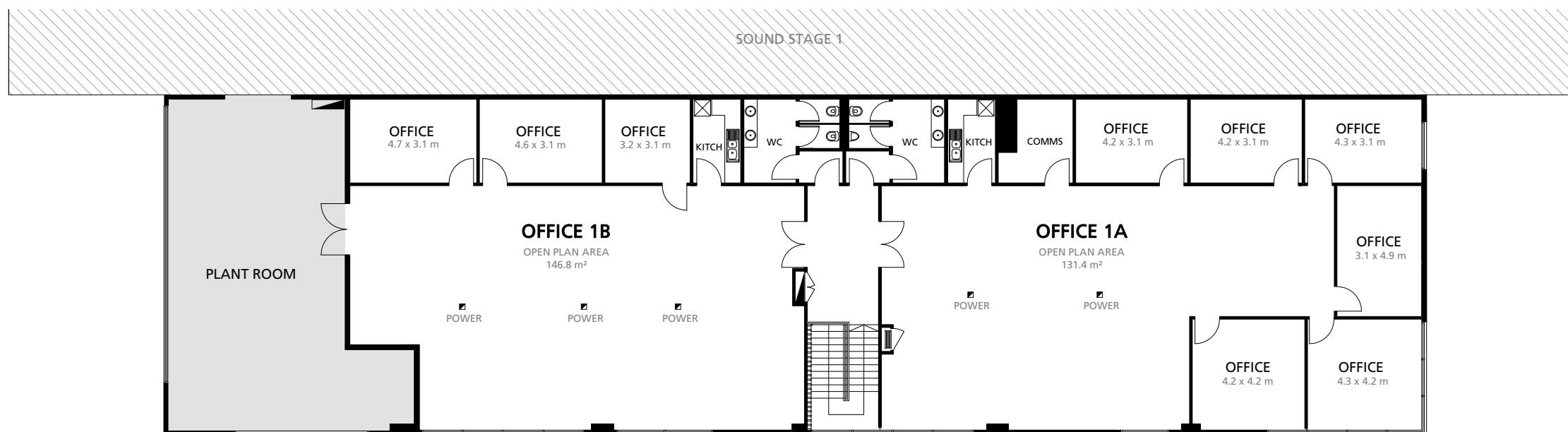
1 : 200 @ A3



OFFICE 1A TOTAL USABLE AREA
226 m² / 2,432 ft²

OFFICE 1B TOTAL USABLE AREA
189 m² / 2,034 ft²

LOADING BAY FLOOR LOADING LIMIT
5 kPa



2 UPPER LEVEL PLAN



KEY PLAN

Docklands Studios Melbourne

476 Docklands Drive
Docklands VIC 3008

www.dsmelbourne.com

AUG 2023