

**1** GROUND LEVEL PLAN

# STAGE 1 OFFICE PLAN

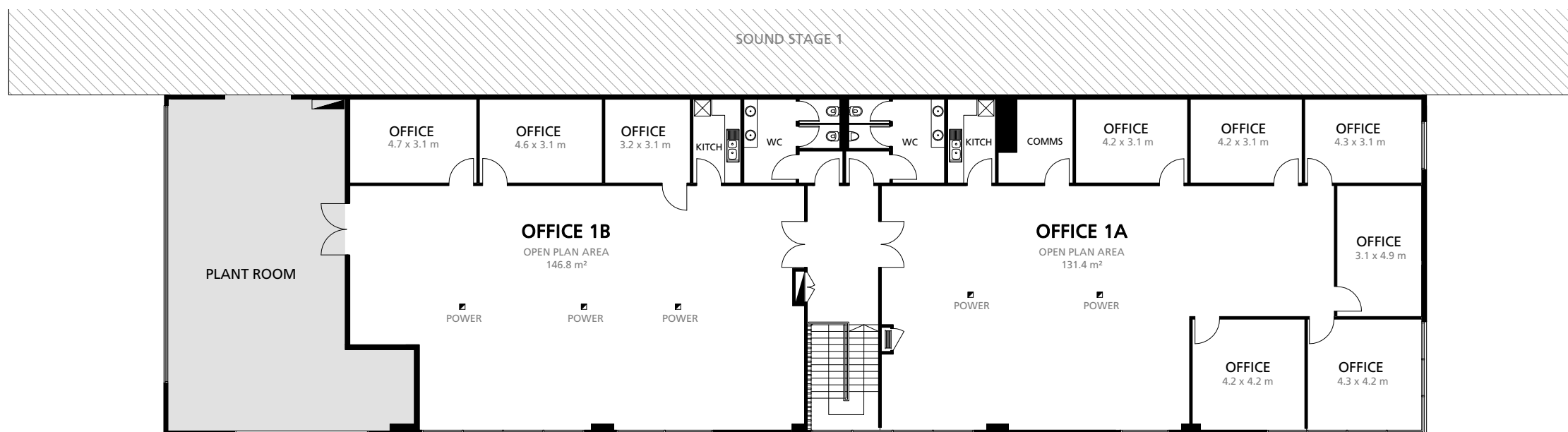
1 : 200 @ A3



OFFICE 1A TOTAL USABLE AREA  
226 m<sup>2</sup> / 2,432 ft<sup>2</sup>

OFFICE 1B TOTAL USABLE AREA  
189 m<sup>2</sup> / 2,034 ft<sup>2</sup>

LOADING BAY FLOOR LOADING LIMIT  
5 kPa



**2** UPPER LEVEL PLAN



KEY PLAN

**Docklands Studios Melbourne**

476 Docklands Drive  
Docklands VIC 3008

www.dsmelbourne.com

NOV 2021