

STAGE 1

GROUND LEVEL PLAN

1 : 200 @ A3

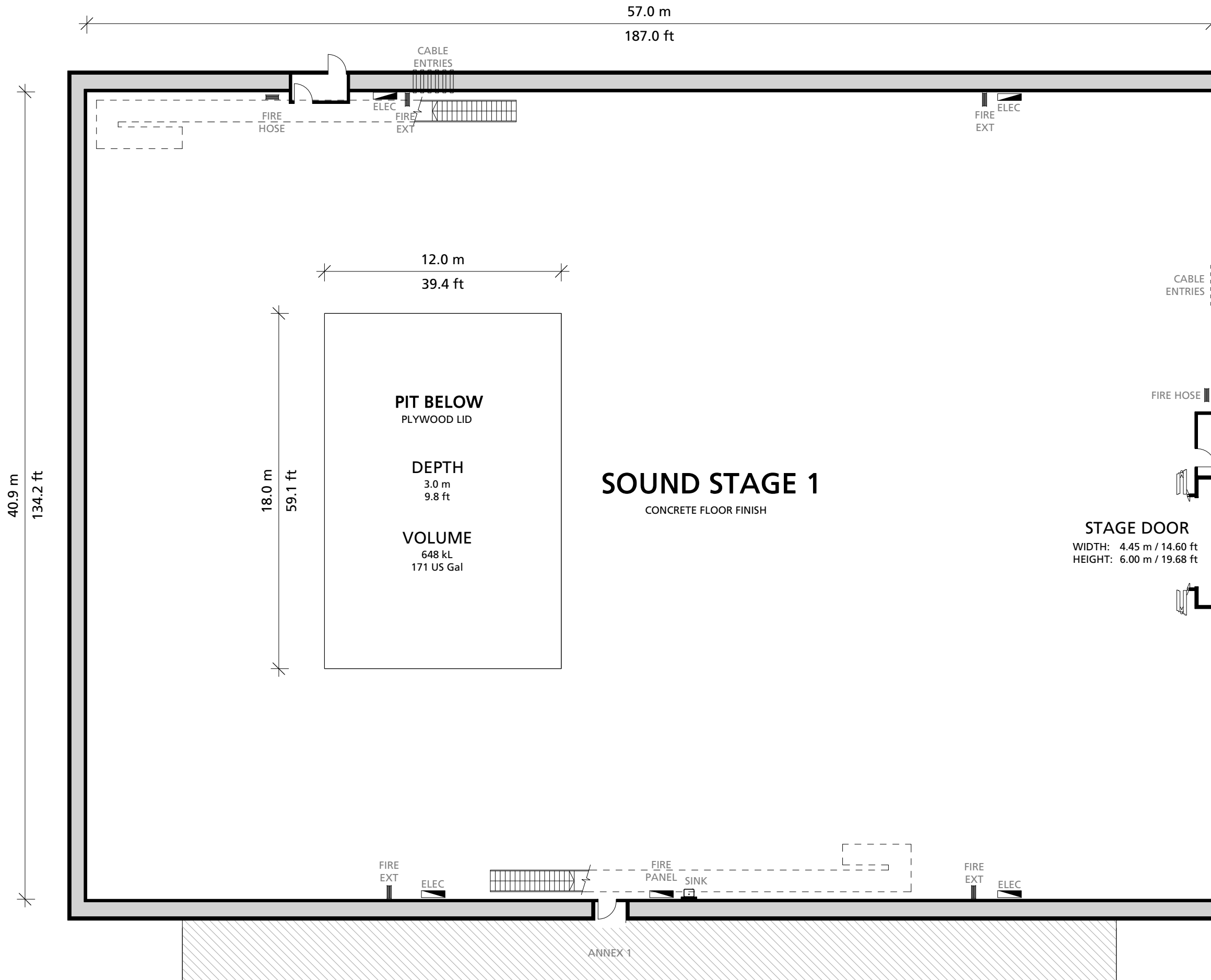


INTERNAL AREA
2,323 m² / 25,000 ft²

GANTRY HEIGHT
14.7 m / 48.2 ft

STAGE FLOOR LOADING LIMIT
7.5 kPa

PIT LID LOADING LIMIT
7.5 kPa



STAGE 1

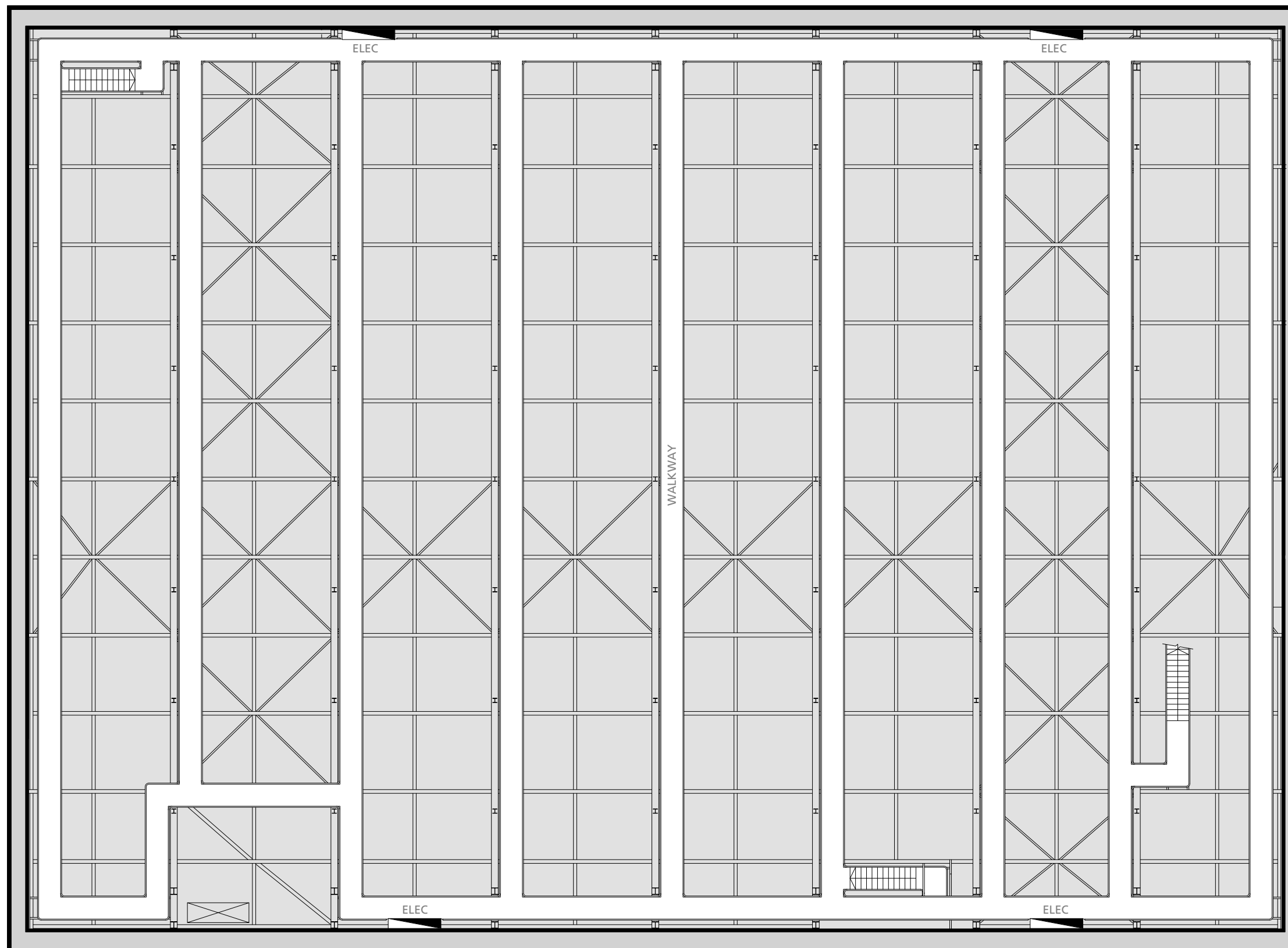
GRID PLAN

1 : 200 @ A3



INTERNAL AREA
2,323 m² / 25,000 ft²

GANTRY HEIGHT
14.7 m / 48.2 ft

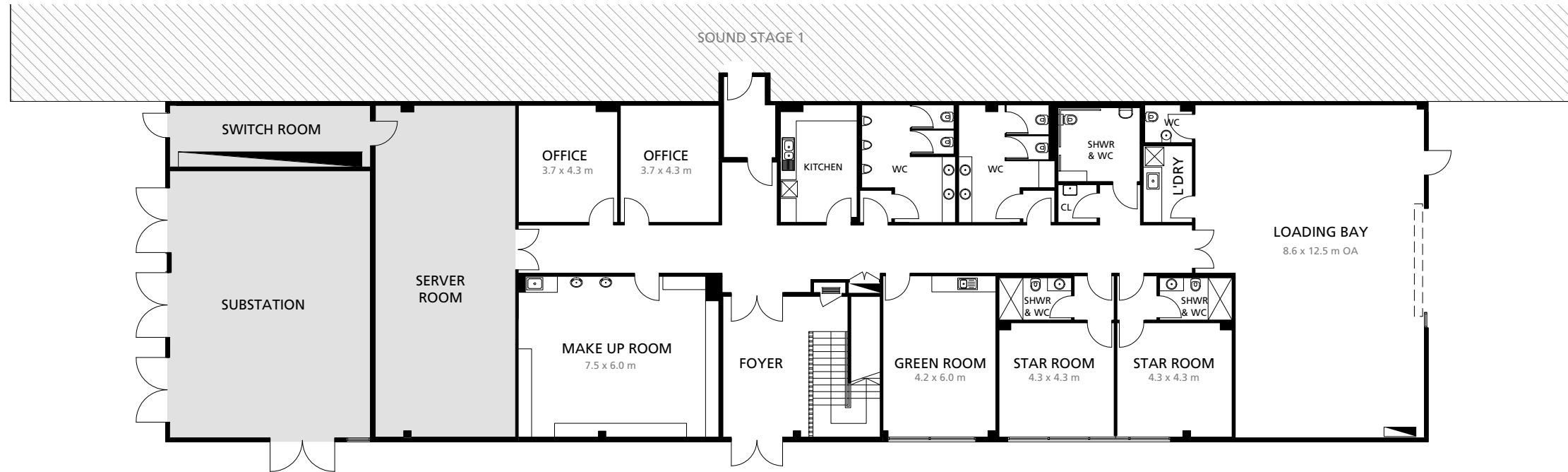


Docklands Studios Melbourne

476 Docklands Drive
Docklands VIC 3008

www.dsmelbourne.com

NOV 2021



1 GROUND LEVEL PLAN

STAGE 1 OFFICE PLAN

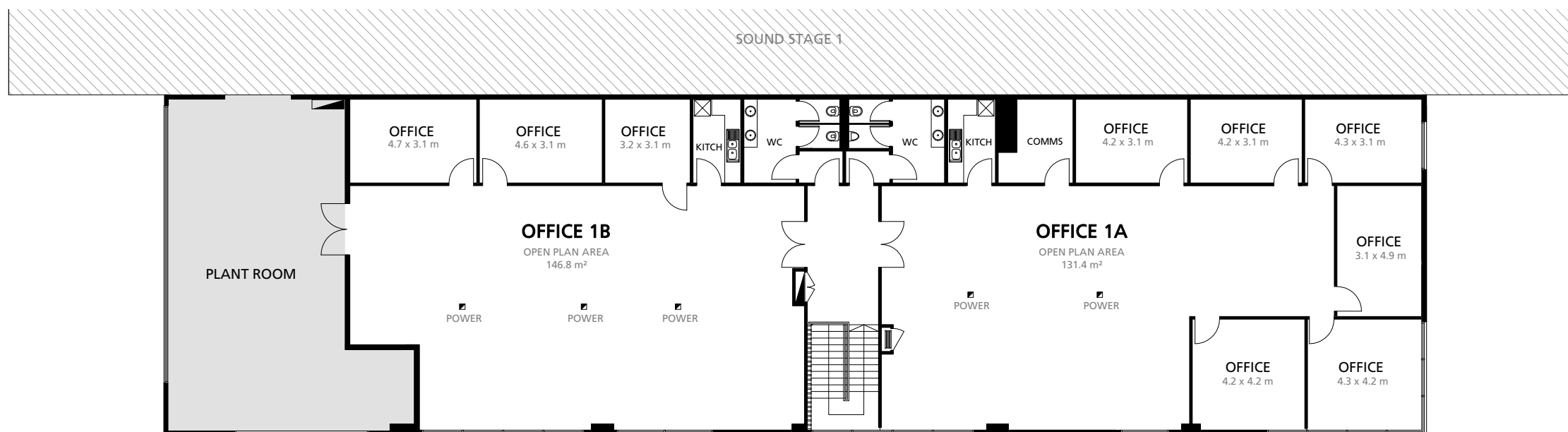
1 : 200 @ A3



OFFICE 1A TOTAL USABLE AREA
226 m² / 2,432 ft²

OFFICE 1B TOTAL USABLE AREA
189 m² / 2,034 ft²

LOADING BAY FLOOR LOADING LIMIT
5 kPa



2 UPPER LEVEL PLAN



Docklands Studios Melbourne

476 Docklands Drive
Docklands VIC 3008

www.dsmelbourne.com

AUG 2023