

# STAGE 6

## GROUND LEVEL PLAN

1 : 250 @ A3

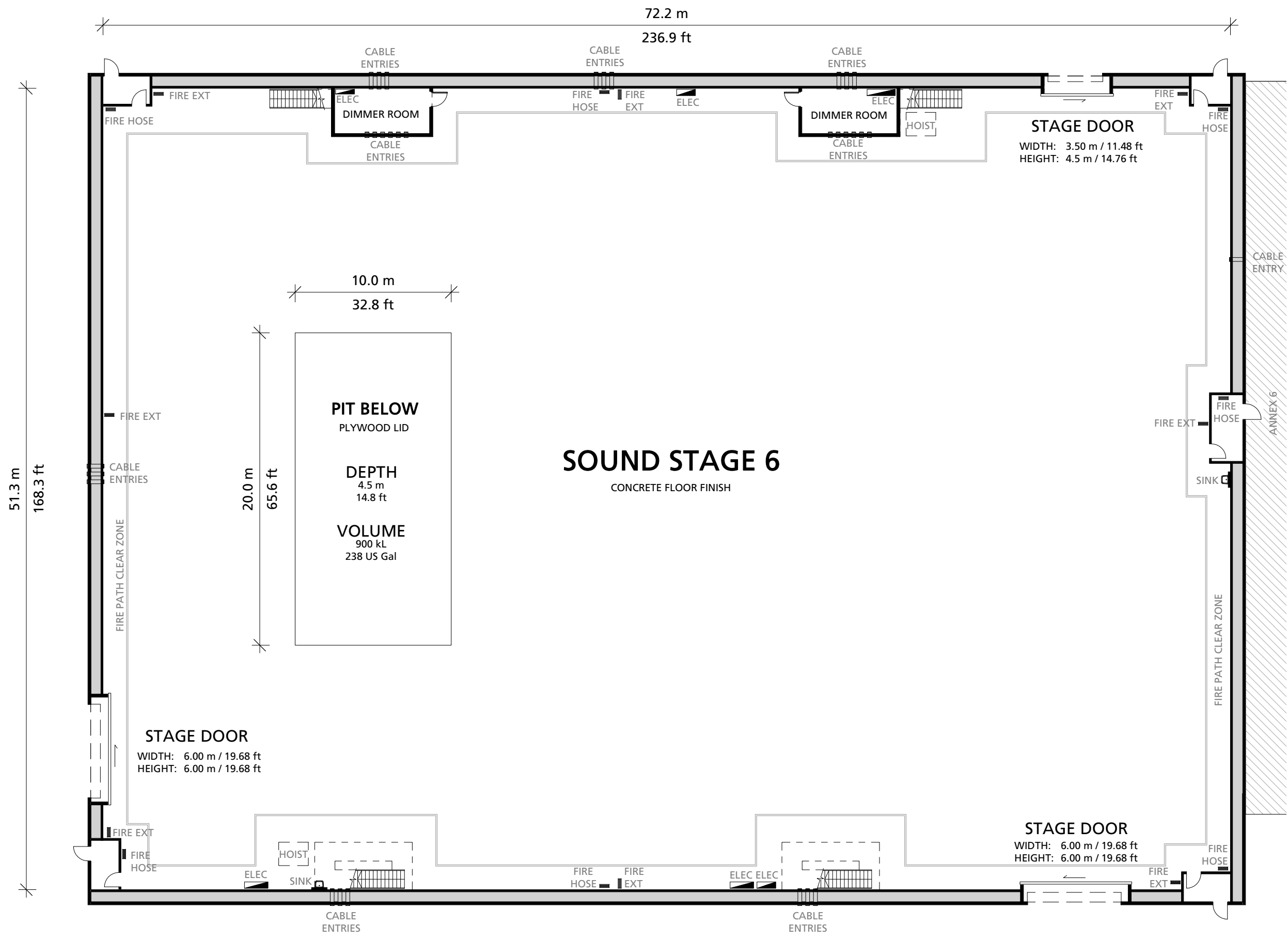


INTERNAL AREA  
3704 m<sup>2</sup> / 39,870 ft<sup>2</sup>

GANTRY HEIGHT  
17.0 m / 55.7 ft

STAGE FLOOR LOADING LIMIT  
20 kPa

PIT LID LOADING LIMIT  
20 kPa



Docklands Studios Melbourne

476 Docklands Drive  
Docklands VIC 3008

www.dsmelbourne.com

NOV 2021

# STAGE 6 OFFICE PLAN

1 : 200 @ A3



OFFICE 6A TOTAL USABLE AREA  
241 m<sup>2</sup> / 2,594 ft<sup>2</sup>

OFFICE 6B TOTAL USABLE AREA  
115 m<sup>2</sup> / 1,238 ft<sup>2</sup>

OFFICE 6C TOTAL USABLE AREA  
19 m<sup>2</sup> / 204 ft<sup>2</sup>

LOADING BAY FLOOR LOADING LIMIT  
7.5 kPa

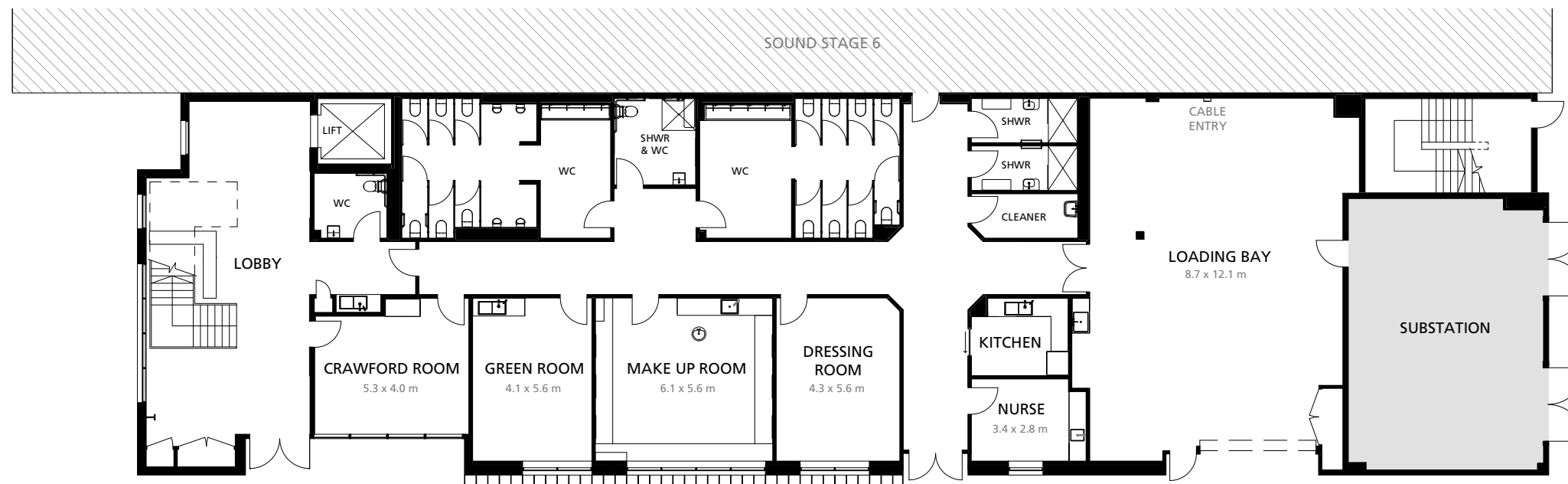


**Docklands Studios Melbourne**

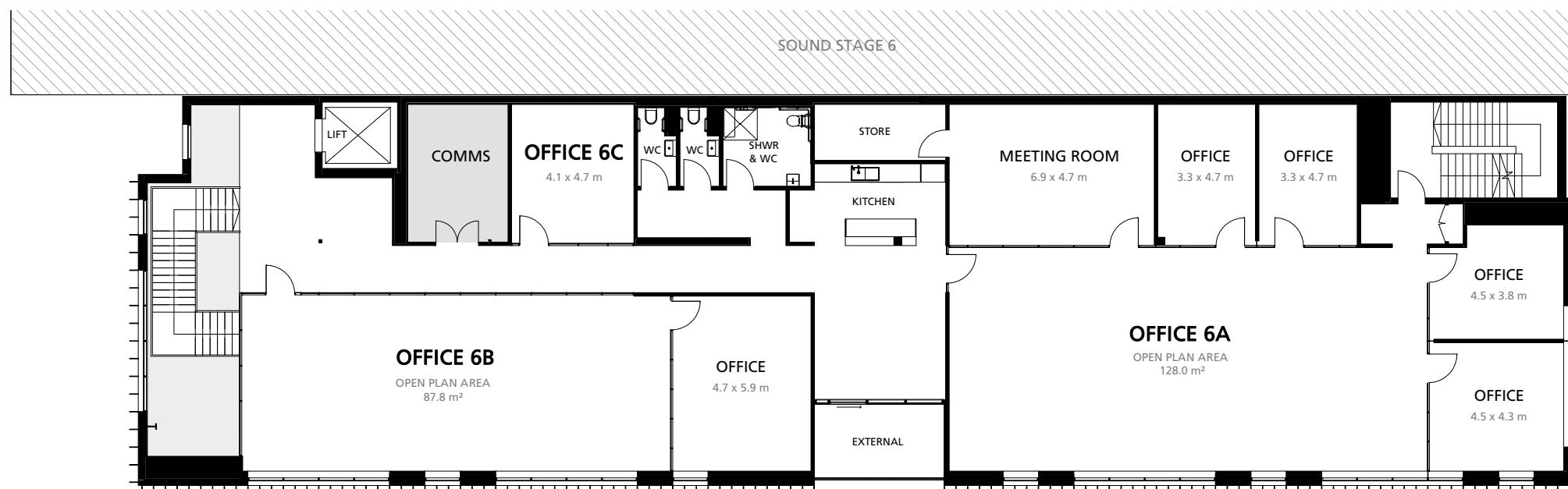
476 Docklands Drive  
Docklands VIC 3008

www.dsmelbourne.com

NOV 2021



## 1 GROUND LEVEL PLAN



## 2 UPPER LEVEL PLAN

# STAGE 6

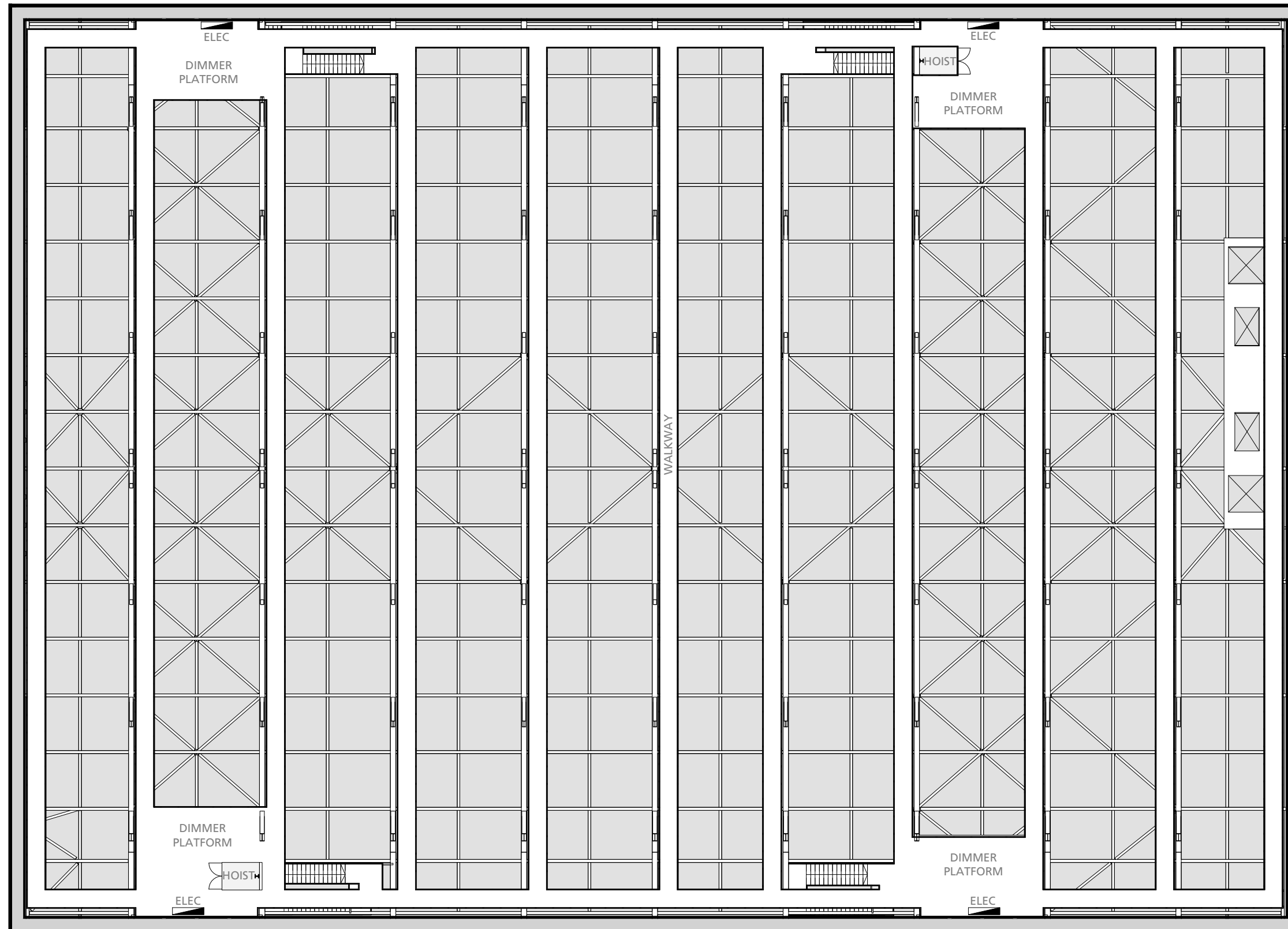
## GRID PLAN

1 : 250 @ A3



INTERNAL AREA  
3704 m<sup>2</sup> / 39,870 ft<sup>2</sup>

GANTRY HEIGHT  
17.0 m / 55.7 ft



Docklands Studios Melbourne

476 Docklands Drive  
Docklands VIC 3008

www.dsmelbourne.com

NOV 2021