

STAGE 4

GROUND LEVEL PLAN

1 : 200 @ A3



INTERNAL AREA
929 m² / 10,000 ft²

GANTRY HEIGHT
9.7 m / 31.8 ft

STAGE FLOOR LOADING LIMIT
7.5 kPa



Docklands Studios Melbourne

476 Docklands Drive
Docklands VIC 3008

www.dsmelbourne.com

NOV 2021

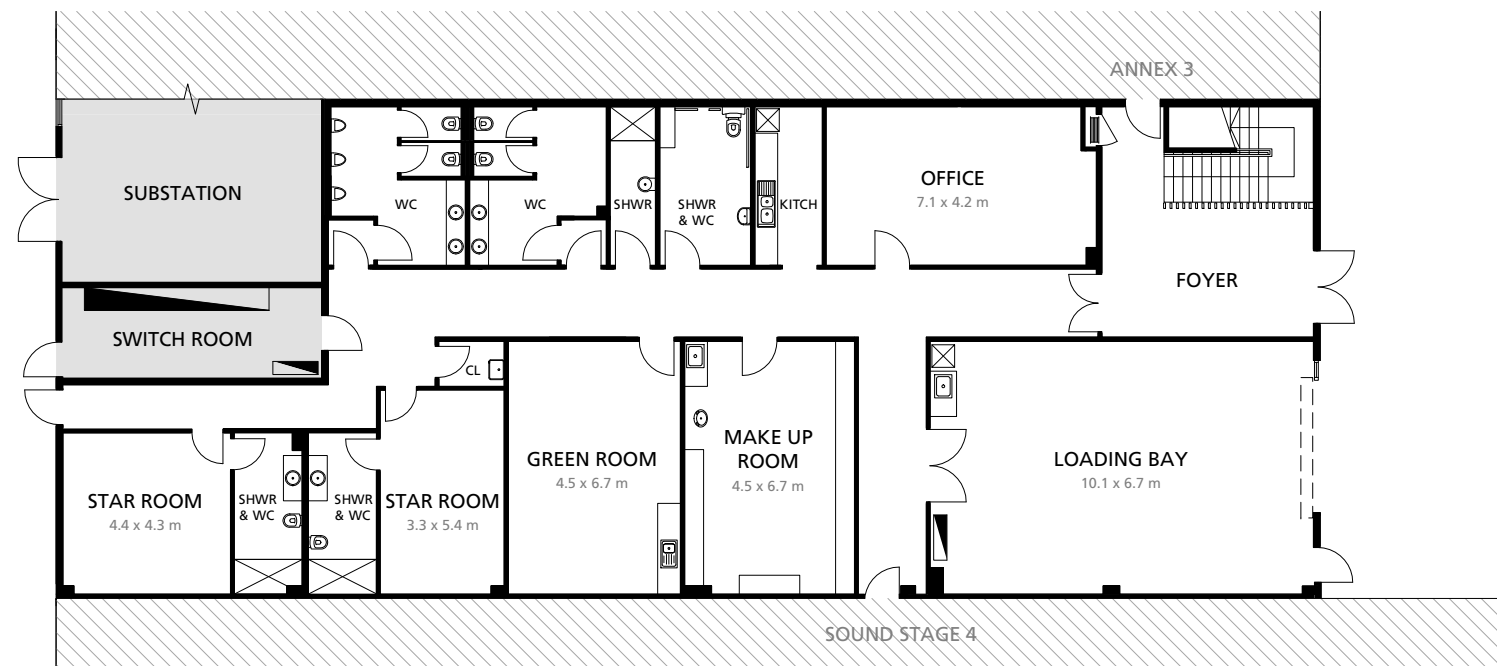
STAGE 4 OFFICE PLAN

1 : 200 @ A3

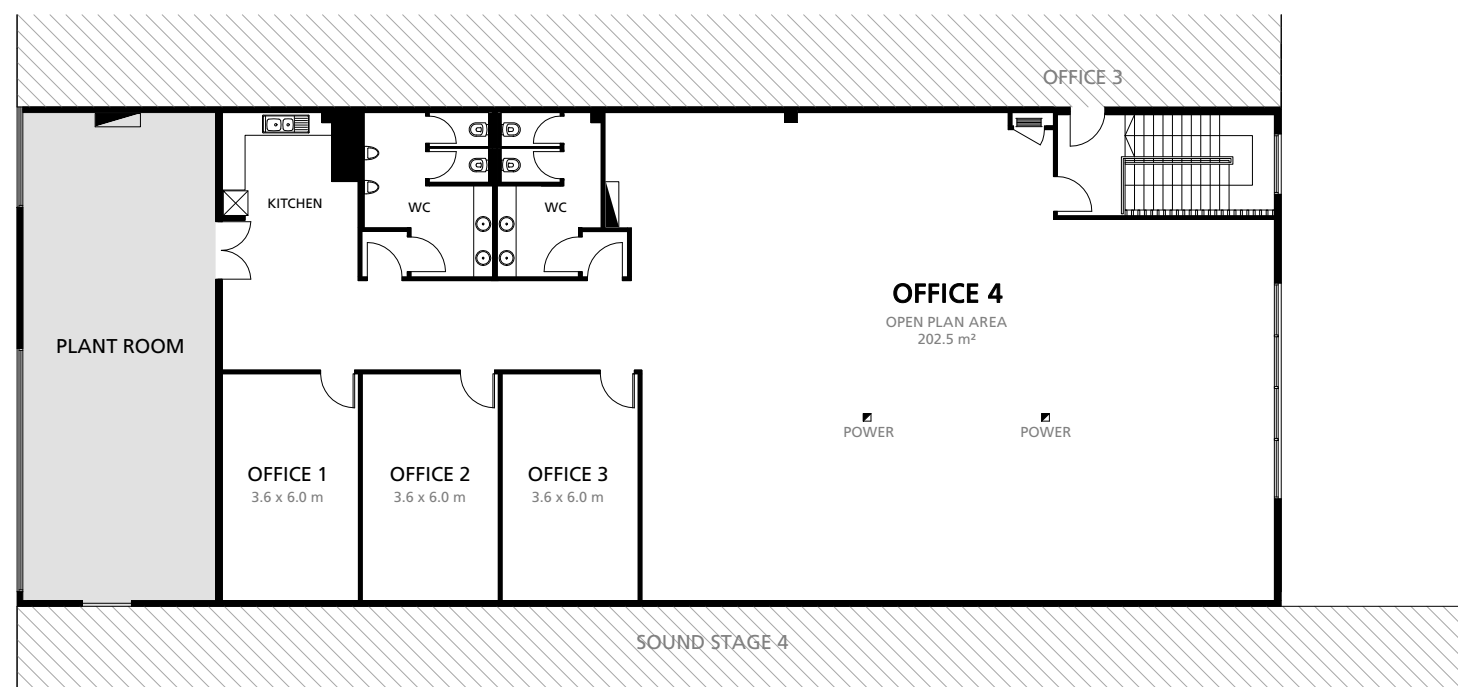


OFFICE 4 TOTAL USABLE AREA
294 m² / 3,163 ft²

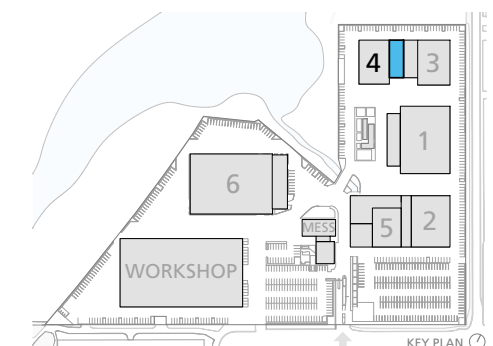
LOADING BAY FLOOR LOADING LIMIT
3 kPa



1 GROUND LEVEL PLAN



2 UPPER LEVEL PLAN



Docklands Studios Melbourne

476 Docklands Drive
Docklands VIC 3008

www.dsmelbourne.com

NOV 2021

STAGE 4

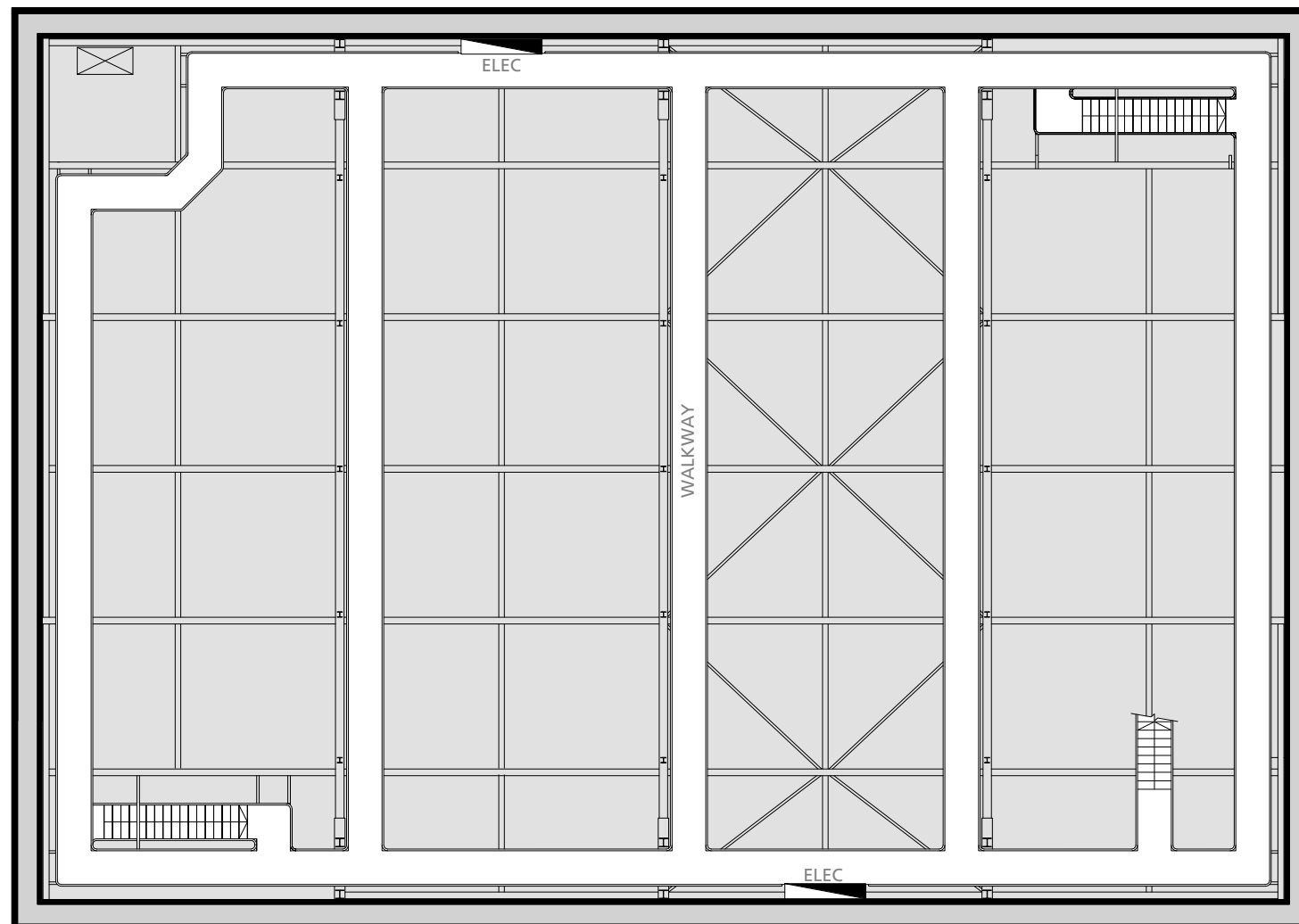
GRID PLAN

1 : 200 @ A3



INTERNAL AREA
929 m² / 10,000 ft²

GANTRY HEIGHT
9.7 m / 31.8 ft



Docklands Studios Melbourne

476 Docklands Drive
Docklands VIC 3008

www.dsmelbourne.com

NOV 2021