

# STAGE 1

## GROUND LEVEL PLAN

1 : 200 @ A3



INTERNAL AREA  
2,323 m<sup>2</sup> / 25,000 ft<sup>2</sup>

GANTRY HEIGHT  
14.7 m / 48.2 ft

STAGE FLOOR LOADING LIMIT  
7.5 kPa

PIT LID LOADING LIMIT  
7.5 kPa

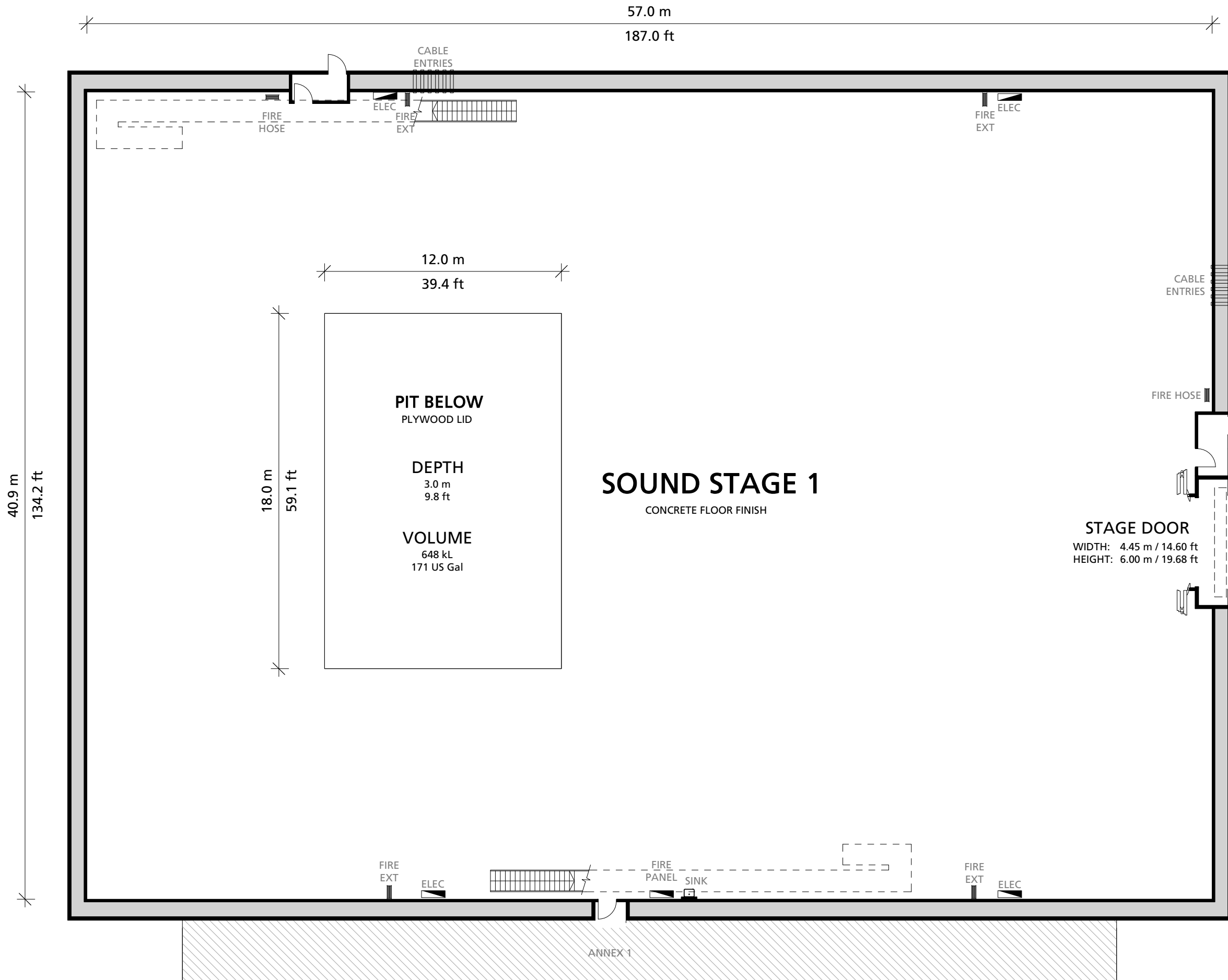


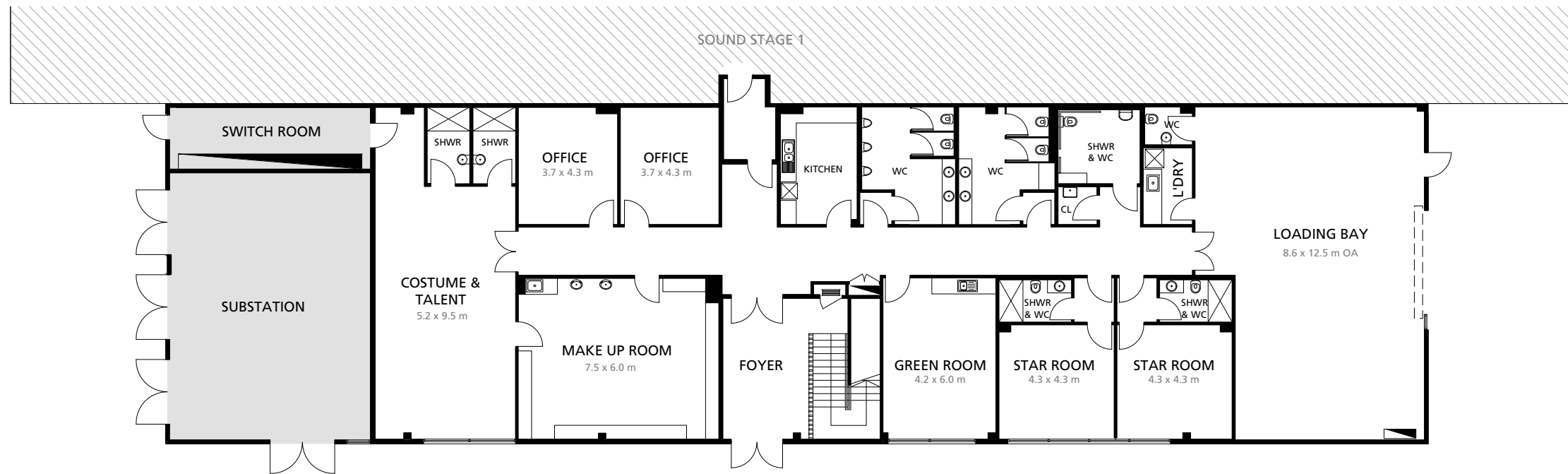
Docklands Studios Melbourne

476 Docklands Drive  
Docklands VIC 3008

www.dsmelbourne.com

NOV 2021





**1** GROUND LEVEL PLAN

# STAGE 1 OFFICE PLAN

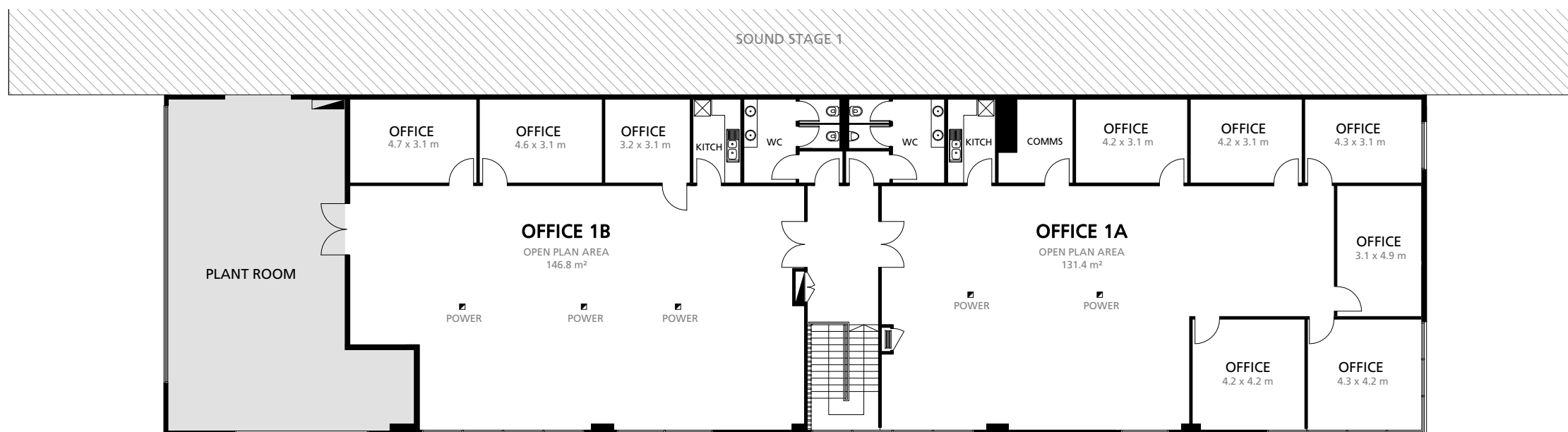
1 : 200 @ A3



OFFICE 1A TOTAL USABLE AREA  
226 m<sup>2</sup> / 2,432 ft<sup>2</sup>

OFFICE 1B TOTAL USABLE AREA  
189 m<sup>2</sup> / 2,034 ft<sup>2</sup>

LOADING BAY FLOOR LOADING LIMIT  
5 kPa



**2** UPPER LEVEL PLAN



**Docklands Studios Melbourne**

476 Docklands Drive  
Docklands VIC 3008

www.dsmelbourne.com

NOV 2021

# STAGE 1

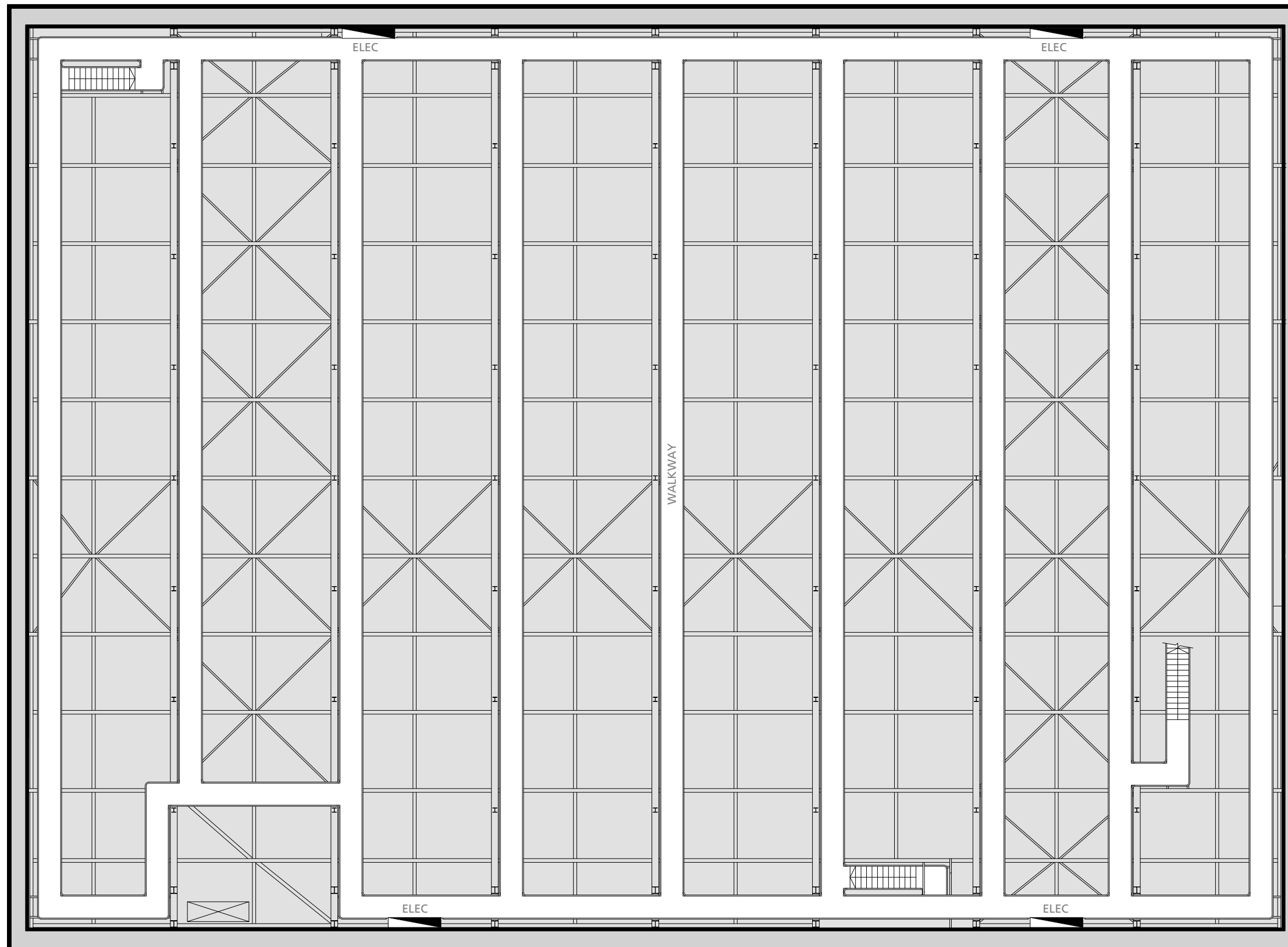
## GRID PLAN

1 : 200 @ A3



INTERNAL AREA  
2,323 m<sup>2</sup> / 25,000 ft<sup>2</sup>

GANTRY HEIGHT  
14.7 m / 48.2 ft



**Docklands Studios Melbourne**

476 Docklands Drive  
Docklands VIC 3008

[www.dsmelbourne.com](http://www.dsmelbourne.com)

NOV 2021